

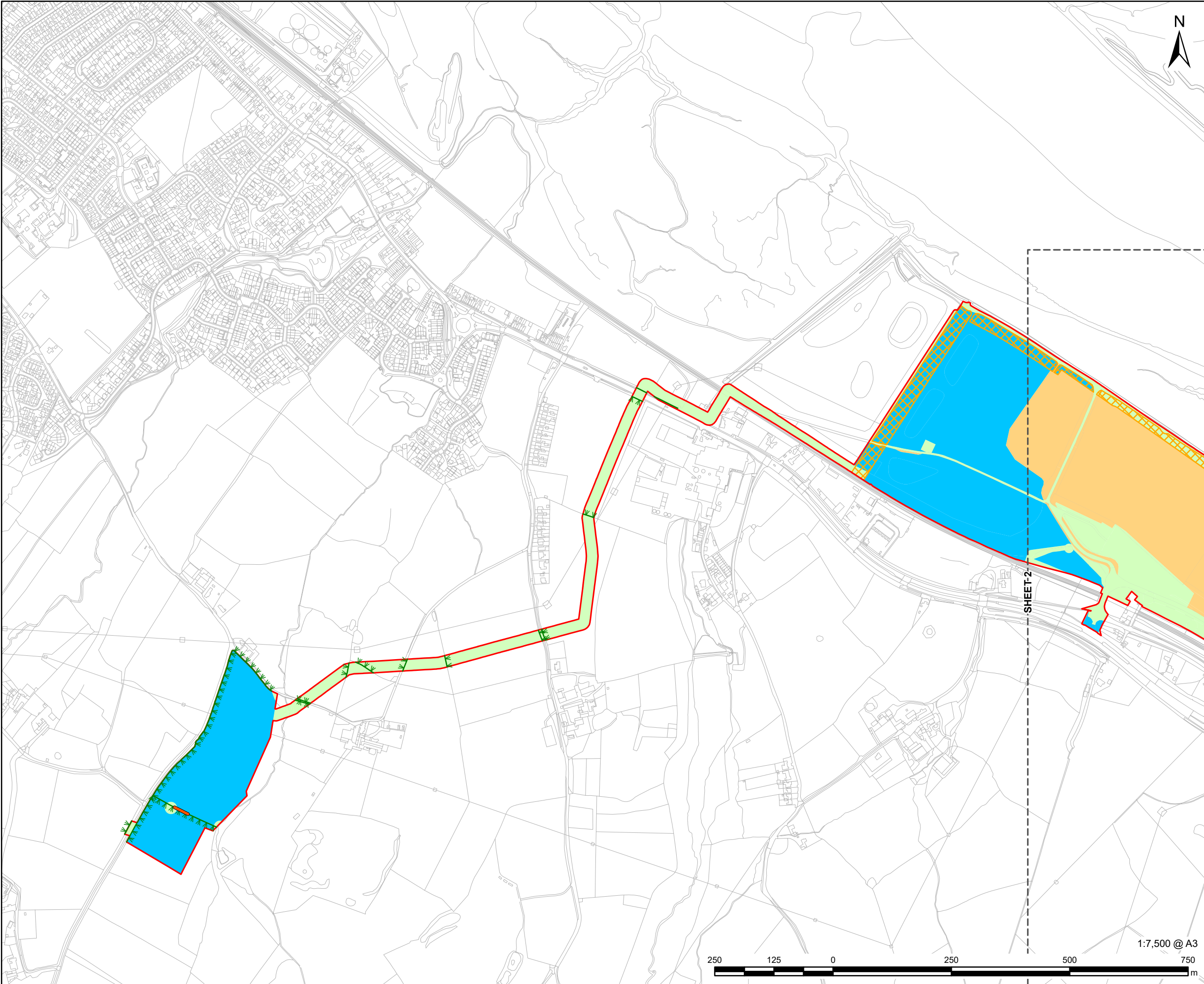
# Connah's Quay Low Carbon Power

Environmental Statement Volume III  
Figure 5-5: Vegetation Clearance Plan

Planning Inspectorate Reference: EN010166  
Document Reference: EN010166/APP/6.3  
Planning Act 2008 (as amended)  
Infrastructure Planning (Applications: Prescribed Forms and Procedure) Regulations 2009 - Regulation 5(2)(a)  
Revision 00

August 2025





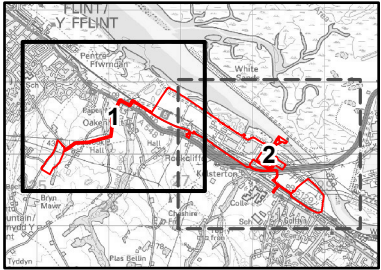
This drawing has been prepared for the use of AECOM's client. It may not be used, modified, reproduced or relied upon by third parties, except as agreed by AECOM or as required by law. AECOM accepts no responsibility, and denies any liability whatsoever, to any party that uses or relies on this drawing without AECOM's express written consent. Do not scale this document. All measurements must be obtained from the stated dimensions.



**PROJECT**  
Connah's Quay Low Carbon Power

**CONSULTANT**  
AECOM Limited  
The Colmore Building  
Colmore Circus, Queensway  
Birmingham, B4 6AT  
www.aecom.com

- LEGEND**
- Construction and Operation Area
  - Ecological Safeguard Zone
  - Hedgerow Removal
  - h2a5 - Species rich native hedgerow
  - h2a6 - Other native hedgerow
  - Retained Habitat
  - Permanent Loss
  - Temporary Loss



**NOTES**  
© Crown Copyright 2025. All rights reserved.  
Ordnance Survey Licence AC0000808122.

**ISSUE PURPOSE**  
Environmental Statement

**DATE**  
July 2025

**PROJECT NUMBER**  
60717119

**FIGURE TITLE**  
Vegetation Clearance Plan  
Sheet 1 of 2

**FIGURE NUMBER**  
Figure 5-5



